

Dream Grandeur  
Life at its PEAK



a Majestic life style with





## PROJECT HIGHLIGHTS :

- 2 & 3 BHK Villa Options
- Eco friendly architecture
- Quality construction
- Beautiful landscaping with ample greenery
- Car parking
- 24 Hours security

Features

### STRUCTURE :

RCC composite structure with brick / stone masonry and cement plastering.

### FLOORING :

Vitrified flooring in all bedrooms.

Ceramic tiles for toilets and balcony.

### DOORS AND WINDOWS :

Main door : Teakwood frame with decorative panel. Internal doors : 40 mm designer flush doors with laminate finish on both side, Anodized/powder coating aluminum section window with coloured reflective glass.

### RAILING :

Stainless steel railing with M S grill.

### KITCHEN :

Granite counter with stainless steel sink.

2 feet ceramic tile dado above counter and vitrified flooring. Provision for Exhausts fans, hot and cold mixer and washing machine.

### TOILETS :

Ceramic dado up to door frame.

Toilets fixture with CP fitting and mirrors.

Designer tiles with branded fittings in toilets.

### ELECTRICAL :

Modular switches.

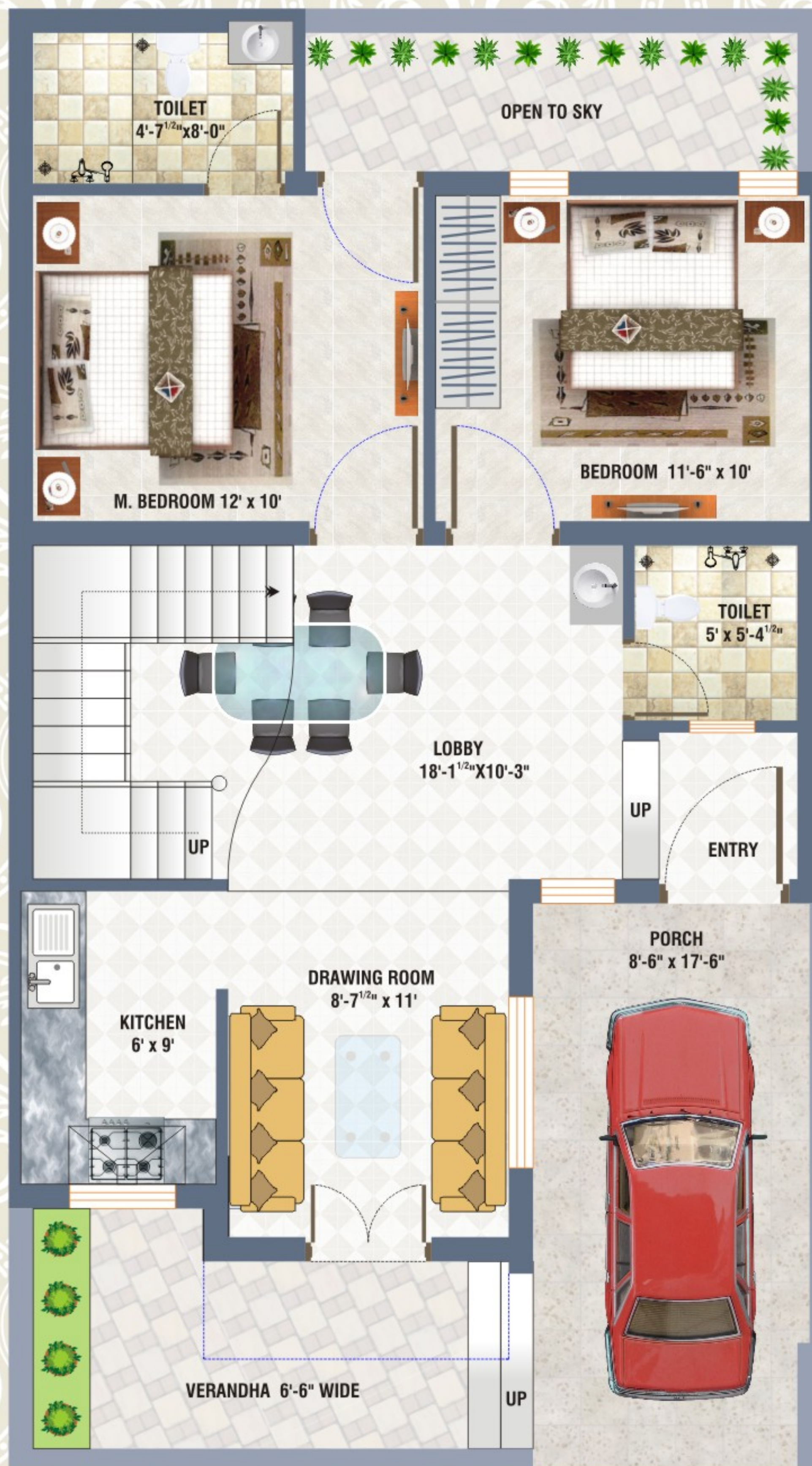
Concealed conduits with fire retardant copper wires and suitable points for power and lighting circuits. aggregated power and lighting circuits.

### PAINTING :

Exterior and Interior wall putty & colour.







G.F. Buildup Area = 805 SQ.FT.  
 F.F. Buildup Area = 350 SQ.FT.  
 TOTAL Area = 1155 SQ.FT.



F.F. Buildup Area = 350 SQ.FT.

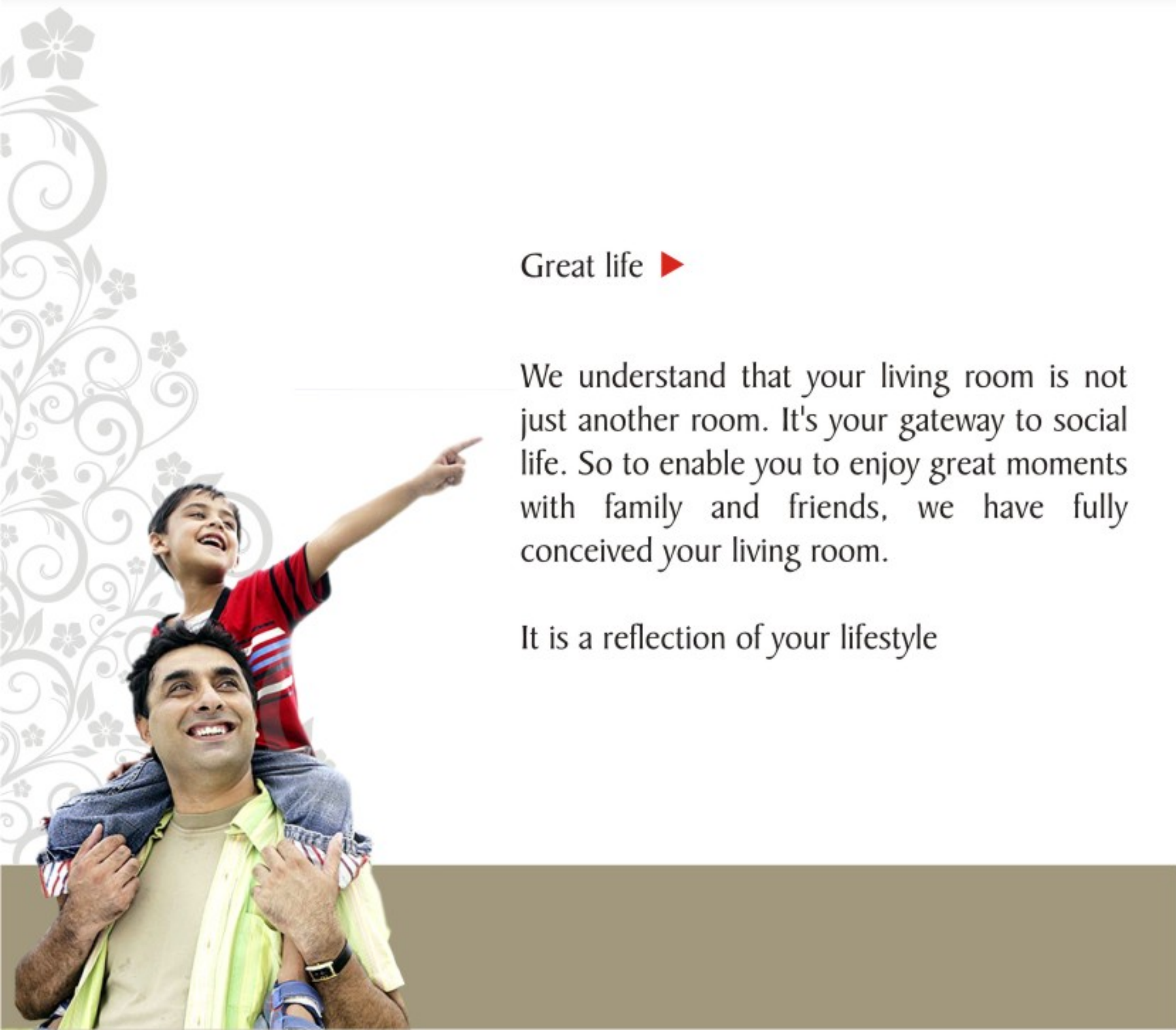




## ◀ Your Prime space under the roof

Come unwind and rejuvenate yourself with space exclusively designed for you. We have focused on delivering the best ambience so that you get the perfect cozy moment to make this life special.

Your bedroom is designed to offer you supreme satisfaction.



## Great life ▶

We understand that your living room is not just another room. It's your gateway to social life. So to enable you to enjoy great moments with family and friends, we have fully conceived your living room.

It is a reflection of your lifestyle







## ◀ Cooking up a good life....

Good food is inevitable for realizing great moments. We understand this and therefore we have laid great details into your very new 'Modular' kitchen. Modular in every sense with best grade granite for platform, high quality stainless steel sink and great space for storage, get ready to apprehend class and redefined functionality.

We understand your requirements better.

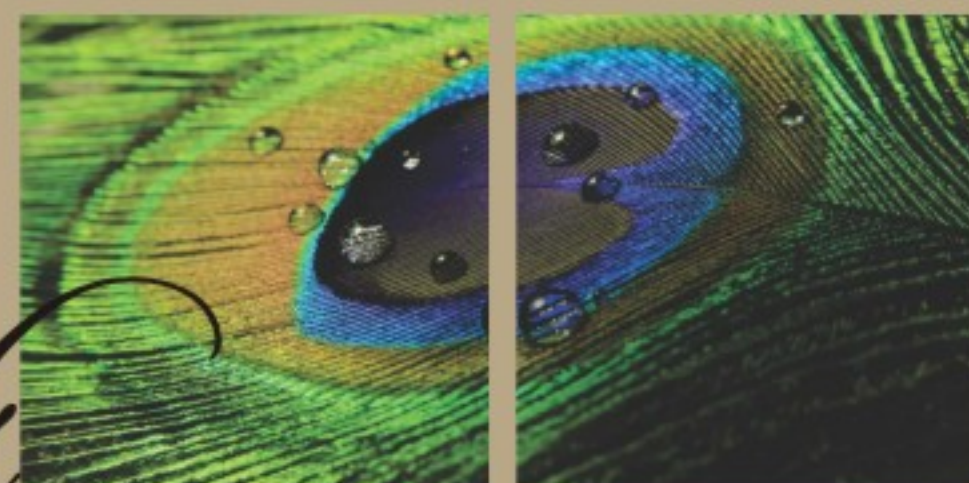
# Bounty

Reap the rewards of a lifetime of toil in equal measure. A promise of fine construction, endless recreation, as enviable facade and a strategic location with a winning Return of Investment .....

*We kept austerity in mind and  
brought serenity home for you.*



# Life is in details



Life is all about the nuances whose seamless functioning increases our realm of possibilities manifold. Aditya Dwarkasdish Valley Creates new opportunities for the most luxuriant living experiences, only for you.

Revel in a lifestyle that is truly invigorating. Make Aditya Dwarkasdish Valley your own abode ...

# Beauty



Ergonomics - a concept that factors in the most basic human needs for space - from ample storage to ease of movement. Aditya Dwarkasdish Valley embodies layout design that envelopes privacy as well as elegance ...



come & feel  
the difference



Vision for  
**Dream Home**









Developer & Promoter :  
**Aditya Builders & Developers**  
 1st Floor, Amar Tower,  
 Mahendra Motors, Opp. LIC Office,  
 Jaljog Circle, Jodhpur (Raj.)

**Site Address :**  
 Kharda Randheer,  
 Sardar Samand Road  
 Jodhpur (Raj.)

**Contact Persons :**  
**Abhishek**  
 +91 98290 49111  
**Bharat**  
 +91 85 0291 0005



## Key Plan



Distance From	:	-
Air Port	:	2.5 km
Ratanada Circle	:	6.0 km
Railway Station	:	7.5 km
New Heigh Court	:	8.0 km

A Project of  
**Aditya Builders & Developers**  
 trust | credibility | efficiency

Situated at Kharda Randheer, Near to Ratanada, Jodhpur - the fastest developing area of Jodhpur City. A prime location with all possible amenities and conveniences Clubs, Restaurants, Medical Facilities, Academic Institutions in proximity.

One that is far away from the hustle and bustle of the city centre. Free of traffic congestion and pollution. Surrounded by wide open spaces in an unpolluted environment, airy, peaceful, Close to Nature.

Everything you'd want around your home and something you'd rarely get, which is why we say that Aditya Dawarkadhish Valley is more than just a natural living .